



Town • Country • Coast



Pentillie View

Bere Alston, Yelverton

Guide Price £335,000



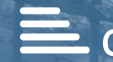
4



2



1



C

Pentillie View

Bere Alston, Yelverton

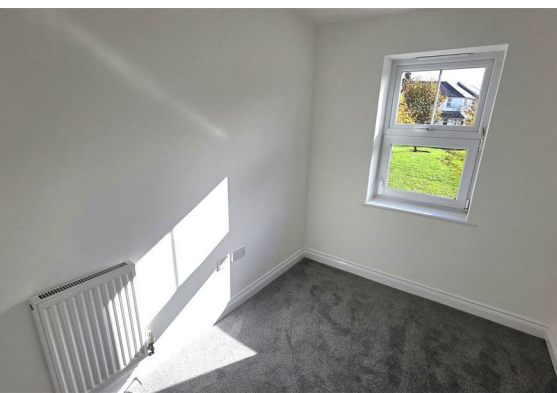
Nestled in the charming village of Bere Alston, Yelverton, this delightful house at Pentillie View offers a perfect blend of comfort and modern living. With four spacious bedrooms, this property is ideal for families or those seeking extra space for guests or a home office. The well-appointed reception room provides a welcoming atmosphere, perfect for entertaining or relaxing after a long day. NO ONWARD CHAIN.

The house features two bathrooms, ensuring convenience for all residents and visitors. The layout is thoughtfully designed to maximise space and light, creating a warm and inviting environment throughout. With off road parking and a Garage with Utility area.

Situated in a picturesque area, this property benefits from the tranquillity of village life while being within easy reach of local amenities and transport links. Whether you are looking to enjoy the scenic beauty of the surrounding countryside or the vibrant community spirit, this home offers an excellent opportunity to embrace a fulfilling lifestyle.

With its appealing features and prime location, this house at Pentillie View is a must-see for anyone seeking a new home in the Bere Peninsula area. Don't miss the chance to make this lovely property your own.





Entrance Hall

Sitting Room

16'2" x 10'3" (4.95m x 3.13m)

Kitchen Diner

17'6" x 11'3" (5.34m x 3.44m)

Cloakroom

First Floor Landing

Bedroom 1

10'3" x 12'4" (3.13m x 3.76m)

Ensuite

6'11" x 5'5" (2.12m x 1.66m)

Bedroom 2

8'8" x 18'2" (2.65m x 5.55m)

Slight restricted head height

Bedroom 3

10'4" x 9'7" (3.15m x 2.94m)

Bedroom 4

6'11" x 8'5" (2.12m x 2.58m)

Garage

18'7" x 8'10" (5.68m x 2.70m)

EPC

C75

Services

Mains water, electricity, drainage and gas.

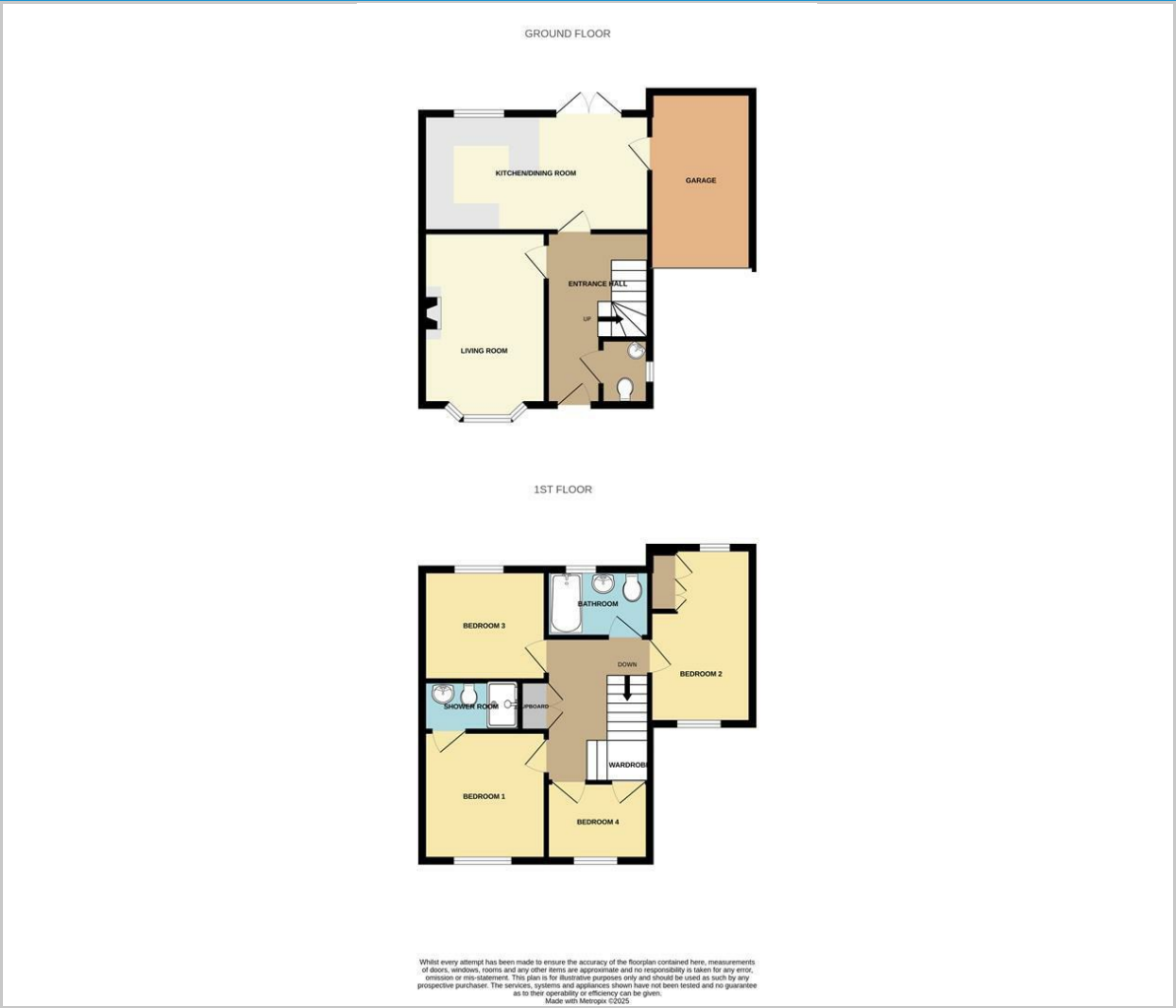
Local Authority

West Devon Borough Council - Tax Band D

Situation

Bere Alston is a village in West Devon which has a regular bus service to Tavistock and also boasts many amenities including a primary school, post office butchers, Co-Op, public house, doctor's surgery and a train station which links the village to Plymouth. The Bere Peninsula is located between the Ocean City of Plymouth and the Ancient Stannary Town of Tavistock.

Floor Plan



Viewing

Please contact our View Property Tavistock Office on 01822 614614 if you wish to arrange a viewing appointment for this property or require further information.

These particulars, whilst believed to be accurate are set out as a general outline only for guidance and do not constitute any part of an offer or contract. Intending purchasers should not rely on them as statements of representation of fact, but must satisfy themselves by inspection or otherwise as to their accuracy. No person in this firms employment has the authority to make or give any representation or warranty in respect of the property.

Unit 1, The Old Dairy Paddons Row, Tavistock, Devon, PL19 0HF
Tel: 01822 614614 Email: Tavy@viewproperty.org.uk www.viewproperty.org.uk

Area Map



Energy Efficiency Graph

